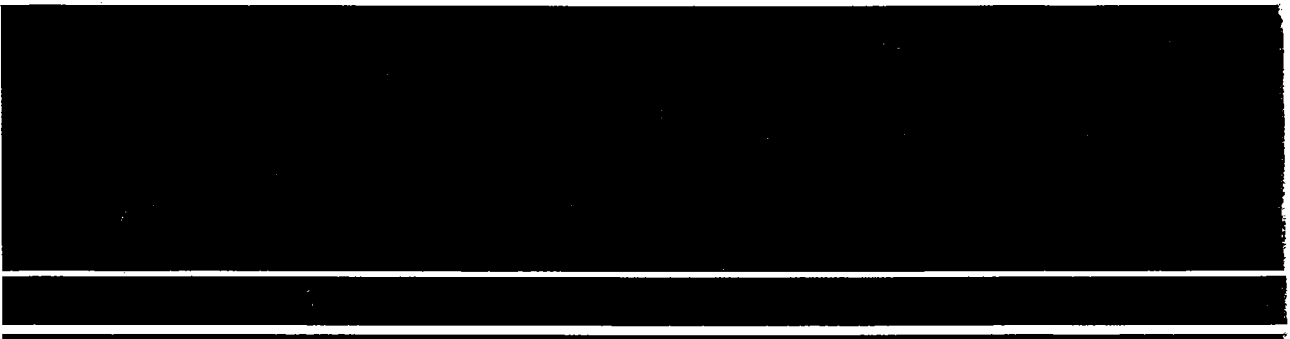
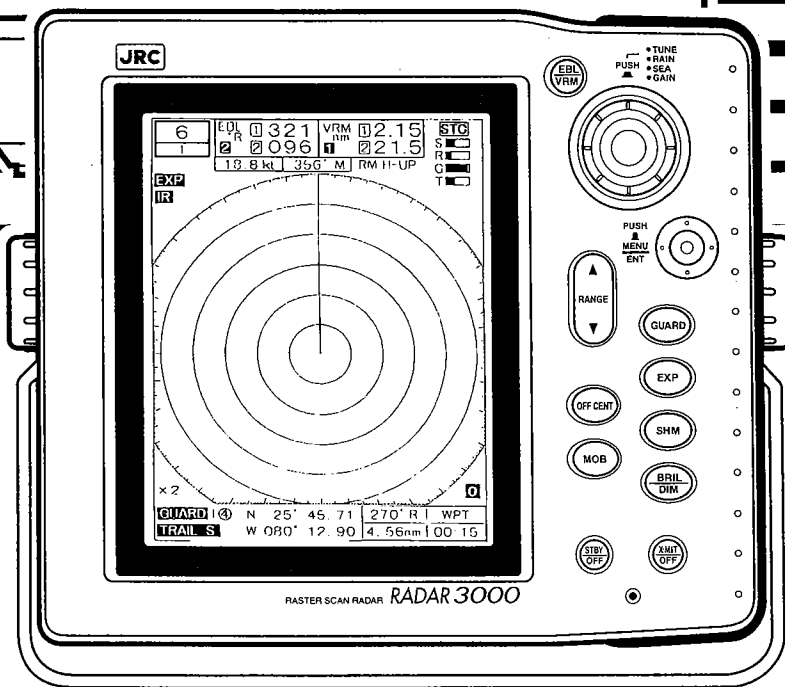




# INSTRUCTION MANUAL



# JRC



# RASTER SCAN RADAR **RADAR 3000**

**Thank you for purchasing the RADAR 3000 radar.  
It will provide many years of trouble free use when operated properly.**

To use your RADAR 3000 properly, please observe the following precautions:

- Read this manual thoroughly to gain a good understanding of the capabilities and requirements of this equipment.
- Store the manual in a safe location so that it does not become lost or damaged.
- Observe standard storage and handling procedures for electronic equipment.
- If after proper installation RADAR 3000 appears to be defective, please contact your JRC sales or service representative for assistance.

### **Symbols Used In This Manual**

The following symbols are used in this instruction manual and on the product itself to ensure correct handling of the product and to protect your safety. Their meanings are explained below. Please take note of these symbols as you read the manual.



#### **WARNING**

A safety warning to alert you of possible physical harm to you or the equipment.



#### **CAUTION**

Equipment damage precaution to alert you of possible harm and/or failure of equipment.



Electric shocks

This symbol is intended to alert the user to the presence of dangerous items to be handled with every possible cation. For safe operation, read the instructions carefully.



Prohibition

These symbols are intended to alert the user to the presence of prohibited items that must never be performed. Read the instructions carefully and do not attempt things prohibited.



Prohibits disassembly




Instruction


This symbol is intended to alert the user to the presence of instructions whose performance is absolutely necessary. Read the instructions carefully and be sure they are executed.

## Operating Precautions


### **Warning**


-  To avoid electrical shock, never touch the inside of the scanner or display unit. Leave protective cover on.

High voltage present inside of these units could cause personal injury. Refer equipment servicing to authorized JRC personnel.


-  Avoid routinely entering the nearby vicinity of the scanner unit.

The scanner unit rotates quickly and could cause personal injury. The scanner should be installed in a high place such as the cabin roof, flying bridge, radar mast, or the top base frame of your ship. If the scanner cannot be located out of normal human reach, it should be surrounded with a fence. Prolonged human exposure to radar signals at close range is not recommended.


-  Before approaching or removing the scanner unit, turn off the STBY/OFF and X-MIT/OFF keys on the display unit. Cable connector P1 on the display unit should be disconnected before removing the scanner unit from its installed position.

-  Never sit on the scanner unit.  
The radome and/or the parts in the scanner unit may be damaged.

### **Caution**

-  Use your RADAR 3000 system properly by following the instructions in this manual.

Incorrect operation can detract from optimum system performance.

-  This radar unit is only an aid to navigation. Its accuracy can be affected by many factors including equipment failure or defects, environmental conditions, and improper handling or use. It is the user's responsibility to exercise common prudence and navigational judgment. This radar unit should not be relied upon as a substitute for such prudence and judgment.

